



1109 Series 中型

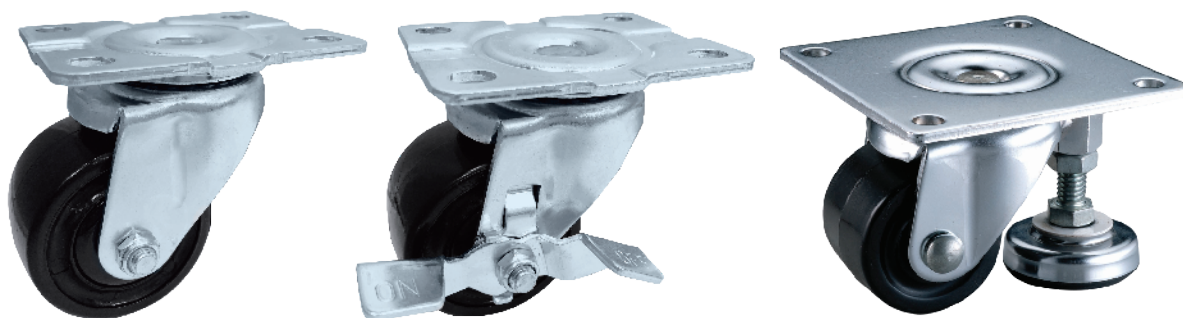
美国轮系列

Medium Duty/Low Profile Business Machine Caster

- 采用高耐磨尼龙制成，轮宽较大是小轮中负载高的系列，适合荷重高、移动较少的商业机械设备。其中大底板附支撑脚的款式，可增大荷重，其支撑脚可调整高度并可随意稳固地停放台车。
- Made of synthetic material with excellent abrasion resistance. Wide tread withstands heavy load, suitable for business machine. Item with floor lock is designed for extra heavy load and immobility function. Height is also adjustable for model with floor lock.



载重 Load
50-400 kg



特色区 Features

轮子选项 Wheel Options



侧刹
Side Lock Brake



支撑脚
Glide



尼龙轮
Nylon



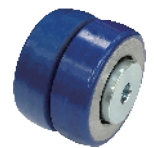
电木轮
Phenolic



塑料轮
PP



中管 Plain Bearing
滚珠轴承 Ball Bearing
滚针轴承 Roller Bearing



ZQPU轮
QPU(Dual Wheels)



QPU轮
QPU



金钢轮
King Kong Wheel

底板规格 TOP PLATE SIZE AND BOLT HOLE SPACING

脚轮尺寸 Caster Size	底板尺寸 Top Plate Size	底板孔距 Bolt Hole Spacing	安装尼帽尺寸 Attaching Bolt Size
2"x 1" 美国轮 2"x 1"	58 x 70 mm (2-1/4"x 2-3/4")	40 x 55 mm (1-9/16"x 2-3/16")	8 mm (5/16")
2"x1"-15/16" 美国轮 2"x1"-15/16"	65 x 95 mm (2-3/4"x 3-3/4")	45 x 75 mm (1-3/4"x 3")	8 mm (5/16")
2"x1"-15/16" 美国轮大底板 2"x1"-15/16" Caster with floor Lock	120 x 120 mm (4-23/32"x 4-23/32")	95 x 95 mm (3-3/4"x 3-3/4")	10 mm (3/8")
2-1/2"x 1-15/16" 美国轮 2-1/2"x 1-15/16"	65 x 95 mm (2-3/4"x 3-3/4")	45 x 75 mm (1-3/4"x 3")	8 mm (5/16")
2-1/2" 美国轮大底板 2-1/2"x 1-15/16" Caster with floor Lock	120 x 120 mm (4-23/32"x 4-23/32")	95 x 95 mm (3-3/4"x 3-3/4")	10 mm (3/8")
3" 美国轮 3"x1-15/16"	86 x 110mm (3-3/8"x 4-5/16")	60 x 83 mm (2-3/8"x 3-1/4")	10 mm (3/8")
3" 美国轮大底板 3"x1-15/16" Caster with floor Lock	120 x 120 mm (4-23/32"x 4-23/32")	95 x 95 mm (3-3/4"x 3-3/4")	10 mm (3/8")





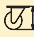



» 丝扣规格 THREADED STEM SPECIFICATION

脚轮尺寸 Caster Size	丝扣牙径 x 长度 Threaded Size	脚轮尺寸 Caster Size	丝扣牙径 x 长度 Threaded Size
2"x3/4"	M10 x 19 (CN) *	2"x1"	M12 x 25 (TW) *
2-1/2" x 1-15/16" 3" x 1-3/4"	M12 x 25 mm (CN) **	2-1/2" x 1-15/16" 3" x 1-3/4"	1/2-13UNC x 25mm (CN) **
2-1/2" x 1-15/16" 3" x 1-3/4"	1/2-12UNC x 32mm (TW) **	2-1/2"x1-15/16" 3" x 1-3/4"	5/8-11UNC x 25mm (TW) **

* 丝扣底部六角台阶 (Hexagon Head)

** 丝扣底部圆头台阶 (Round Head)

 轮径x轮宽 DiameterxWidth	 载重 Load	 材质 Material	 型号 Item No.			 轴承 Bearing	 总高 Overall Height	 回旋半径 Swivel radius
			固定 Fixed	活动 Swivel	刹车 Brake			
50mm x 25mm (2" x 1")	70 kgs (150 lbs)	尼龙轮 Nylon	-	1109-02-07-2	1109-02-07-4	中管 Plain Bearing	70mm (2-3/4")	活动 47.5mm 刹车 54mm Swivel 47.5mm Swivel W/Brake 54mm
	50 kgs (110 lbs)	塑料轮 PP	-	1109-02-29-2	1109-02-29-4			
50mm x 45mm (2 x 1-3/4")	300 kgs (660 lbs)	QPU轮 QPU	1109-02-80-1	1109-02-80-1	-	滚珠轴承 Ball Bearing	73mm (2-7/8")	活动 44mm Swivel 44mm
	300 kgs (660 lbs)	ZQPU轮 QPU(Dual Wheels)	1109-02-101-1	1109-02-101-2	-			
	200 kgs (440 lbs)	尼龙轮 Nylon	1109-02-07-1	1109-02-07-2	-	滚珠轴承 Ball Bearing 中管 Plain Bearing		
	250 kgs (550 lbs)	金钢轮 King Kong Wheel	1109-02-100-1	1109-02-100-2	-	滚珠轴承 Ball Bearing 中管 Plain Bearing		
62.5mm x 45mm (2-1/2" x 1-3/4")	300 kgs (660 lbs)	QPU轮 QPU	1109-25-80-1	1109-25-80-2	1109-25-80-4	滚珠轴承 Ball Bearing	91mm (3-3/5")	活动 60.5mm 刹车 65.5mm Swivel 60.5mm Swivel W/Brake 65.5mm
	300 kgs (660 lbs)	ZQPU轮 QPU(Dual Wheels)	1109-25-101-1	1109-25-101-2	1109-25-101-4			
	250 kgs (550 lbs)	尼龙轮 Nylon	1109-25-07-1	1109-25-07-2	1109-25-07-4			
	140 kgs (305 lbs)	塑料轮 PP	1109-25-29-1	1109-25-29-2	1109-25-29-4			
	350 kgs (770 lbs)	金钢轮 King Kong Wheel	1109-25-100-1	1109-25-100-2	1109-25-100-4	滚珠轴承 Ball Bearing 中管 Plain Bearing		
75mm x 45mm (3" x 1-3/4")	300 kgs (660 lbs)	QPU轮 QPU	1109-03-80-1	1109-03-80-2	1109-03-80-4	滚珠轴承 Ball Bearing	102.5mm (4-1/25")	活动 68.4mm 刹车 68.4mm Swivel 68.4mm Swivel W/Brake 68.4mm
	300 kgs (660 lbs)	ZQPU轮 QPU(Dual Wheels)	1109-03-101-1	1109-03-101-2	1109-03-101-4			
	300 kgs (660 lbs)	尼龙轮 Nylon	1109-03-07-1	1109-03-07-2	1109-03-07-4	滚珠轴承 Ball Bearing 中管 Plain Bearing		
	185 kgs (405 lbs)	塑料轮 Phenolic	1109-03-29-1	1109-03-29-2	1109-03-29-4	滚珠轴承 Ball Bearing		
	225 kgs (500 lbs)	电木轮 Phenolic	1109-03-25-1	1109-03-25-2	1109-03-25-4	滚针 Roller Bearing		
	400 kgs (880 lbs)	金钢轮 King Kong Wheel	1109-03-100-1	1109-03-100-2	1109-03-100-4	滚珠轴承 Ball Bearing 中管 Plain Bearing		