



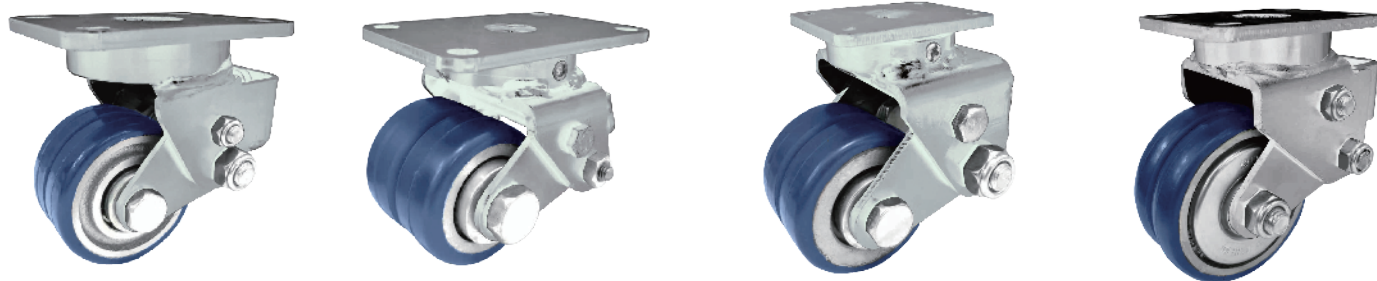
1165 Series 重型

AMR/AGV-1弹簧轮系列

Heavy Duty AMR/AGV Spring-Loading Caster

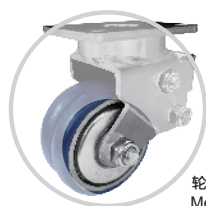
载重 Load
70 - 400 kg

- 脚架采用高钢性板材，配合热处理珠道来达到极高的荷重与长时间的使用寿命，同时又能够确保低重心的要求，适用于 AMR/AGV (无人车)使用。其中搭配弹簧设计，有效吸震维持机械平稳性。
- Caster fork is made of high tensile steel with harden raceway to provide long lasting service life and extreme high load capacity while maintaining low profile and overall height. It is suitable for application like AMR/AGV and robotic industry products. High quality spring design with excellent shock-absorbing capabilities keep machines carried by the caster stable while traveling across uneven surface.

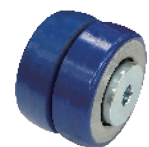


特色区 Features

轮子选项 Wheel Options



轮子可附金属防尘盖(供选择)
Metal Thread Guard(optinal)



ZQPU双轮
ZQPU(Dual Wheels)



QPU轮
QPU



滚珠轴承
Ball Bearing



ZQPU轮(抗静电)
QPU(Dual Anti-Static Wheels)



金刚轮
King Kong Wheel





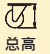

*有其它抗静电轮可供选择，如有需求请联络工厂

*Other Anti-Static Wheels Available, Please Contact The Factory

底板规格 TOP PLATE SIZE AND BOLT HOLE SPACING

编号 Suffix	底板尺寸 Top Plate Size	底板孔距 Bolt Hole Spacing	安装尼帽尺寸 Attaching Bolt Size
2", 2.5"	51 x 65 mm (2" x 2-9/16")	36 x 51.5 mm (1-13/32" x 2-1/32")	6 mm (1/4")
	51 x 84 mm (2" x 3-5/16")	37 x 70 mm (1-15/32" x 2-3/4")	6 mm (1/4")
	60 x 60 mm (2-3/8" x 2-3/8")	42.5 x 42.5 mm (1-11/16" x 1-11/16")	6 mm (1/4")
	60 x 90 mm (2-3/8" x 3-17/32")	44.5 x 73 mm (1-3/14" x 2-7/8")	8 mm (5/16")
3", 4", 5", 6"	85 x 110 mm (3-11/32" x 4-11/23")	60 x 80~86 mm (2-3/8" x 3-5/32"~3-3/8")	8 mm (5/16")



 轮径x轮宽 DiameterxWidth	 载重 Load	**2000公里载重 Guarantee 2000 KM/ 1250 Miles	 材质 Material	 型号 Item No.			 轴承 Bearing	 总高 Overall Height	 回旋半径 Swivel radius
				固定 Fixed	活动 Swivel	刹车 Brake			
50mm x 20mm (41.5) (2" x 3/4")	70 kgs (154 lbs)	50 kgs (110 lbs)	ZQPU轮(双轮) ZQPU(Dual Wheels)	1165-02-101-1	1165-02-101-2	—	滚珠轴承 Ball Bearing	78mm (3-5/64")	活动 55 mm Swivel 55 mm
	70 kgs (154 lbs)	50 kgs (110 lbs)	ZQPU轮(抗静电) QPU(Dual Anti-Static Wheels)	1165-02-101-1	1165-02-101-2	—			
50mm x 40mm (2" x 1-9/16")	70 kgs (154 lbs)	50 kgs (110 lbs)	QPU轮 QPU	1165-02-53-1	1165-02-53-2	—			
50mm x 45mm (2" x 1-13/16")	70 kgs (154 lbs)	—	金钢轮 King Kong Wheel	1165-02-100-1	1165-02-100-2	—			
62.5mm x 20mm (41.5) (2-1/2" x 3/4")	250 kgs (551 lbs)	84 kgs (185 lbs)	ZQPU轮(双轮) ZQPU(Dual Wheels)	1165-25-101-1	1165-25-101-2	—	滚珠轴承 Ball Bearing	100mm (4")	活动 60 mm Swivel 60 mm
	200 kgs (440 lbs)	67 kgs (147 lbs)	ZQPU轮(抗静电) QPU(Dual Anti-Static Wheels)	1165-25-101-1	1165-25-101-2	—			
62.5mm x 45mm (2-1/2" x 1-13/16")	250 kgs (551 lbs)	—	金钢轮 King Kong Wheel	1165-25-100-1	1165-25-100-2	—			
	200 kgs (440 lbs)	67 kgs (147 lbs)	QPU轮 QPU	1165-25-80-1	1165-25-80-2	—			
75mm x 20mm (41.5) (3" x 3/4")	300 kgs (661 lbs)	100 kgs (220 lbs)	ZQPU轮(双轮) ZQPU(Dual Wheels)	1165-03-101-1	1165-03-101-2	—	滚珠轴承 Ball Bearing	110mm (4-3/8")	活动 67.5 mm Swivel 67.5 mm
	250 kgs (551 lbs)	84 kgs (185 lbs)	ZQPU轮(抗静电) QPU(Dual Anti-Static Wheels)	1165-03-101-1	1165-03-101-2	—			
75mm x 45mm (3" x 1-13/16")	300 kgs (661 lbs)	—	金钢轮 King Kong Wheel	1165-03-100-1	1165-03-100-2	—			
	250 kgs (551 lbs)	84 kgs (185 lbs)	QPU轮 QPU	1165-03-80-1	1165-03-80-2	—			
75mm x 20mm (41.5) (3" x 3/4")	300 kgs (661 lbs)	100 kgs (220 lbs)	ZQPU轮(双轮) ZQPU(Dual Wheels)	1165-03-101-1	1165-03-101-2	—	滚珠轴承 Ball Bearing	116mm (4-9/16")	活动 65 mm Swivel 65 mm
	250 kgs (551 lbs)	84 kgs (185 lbs)	ZQPU轮(抗静电) QPU(Dual Anti-Static Wheels)	1165-03-101-1	1165-03-101-2	—			
75mm x 45mm (3" x 1-13/16")	300 kgs (661 lbs)	—	金钢轮 King Kong Wheel	1165-03-100-1	1165-03-100-2	—			
	250 kgs (551 lbs)	84 kgs (185 lbs)	QPU轮 QPU	1165-03-80-1	1165-03-80-2	—			
100mm x 22mm (41.5) (4" x 7/8")	400 kgs (881 lbs)	134 kgs (295 lbs)	ZQPU轮(双轮) ZQPU(Dual Wheels)	1165-04-101-1	1165-04-101-2	—	滚珠轴承 Ball Bearing	145mm (5-45/64")	活动 84 mm Swivel 84 mm
	350 kgs (771 lbs)	117 kgs (257 lbs)	ZQPU轮(抗静电) QPU(Dual Anti-Static Wheels)	1165-04-101-1	1165-04-101-2	—			
125mm x 24mm (41.5) (5" x 1")	500 kgs (1100 lbs)	167 kgs (368 lbs)	ZQPU轮(双轮) ZQPU(Dual Wheels)	1165-05-101-1	1165-05-101-2	—	滚珠轴承 Ball Bearing	175mm (7-1/8")	活动 102 mm Swivel 102 mm
	450 kgs (992 lbs)	150 kgs (330 lbs)	ZQPU轮(抗静电) QPU(Dual Anti-Static Wheels)	1165-05-101-1	1165-05-101-2	—			
150mm x 24mm (41.5) (6" x 1")	350 kgs (771 lbs)	117 kgs (257 lbs)	ZQPU轮(双轮) ZQPU(Dual Wheels)	1165-06-101-1	1165-06-101-2	—	滚珠轴承 Ball Bearing	200mm (8-1/8")	活动 130 mm Swivel 130 mm
	300 kgs (661 lbs)	100 kgs (220 lbs)	ZQPU轮(抗静电) QPU(Dual Anti-Static Wheels)	1165-06-101-1	1165-06-101-2	—			

*荷重皆根据ISO测试标准制定

*The load is tested according to the ISO test standard

**正常使用状态下得胜可保证使用2000公里 · 得胜保留对所有测试手法&保证2000公里的最终解释权

** Guarantee 2000 km life span on the selected AGV caster models under normal field application.
Dersheng reserves the right of the final interpretation on the caster test method and 2000 km guarantee.