

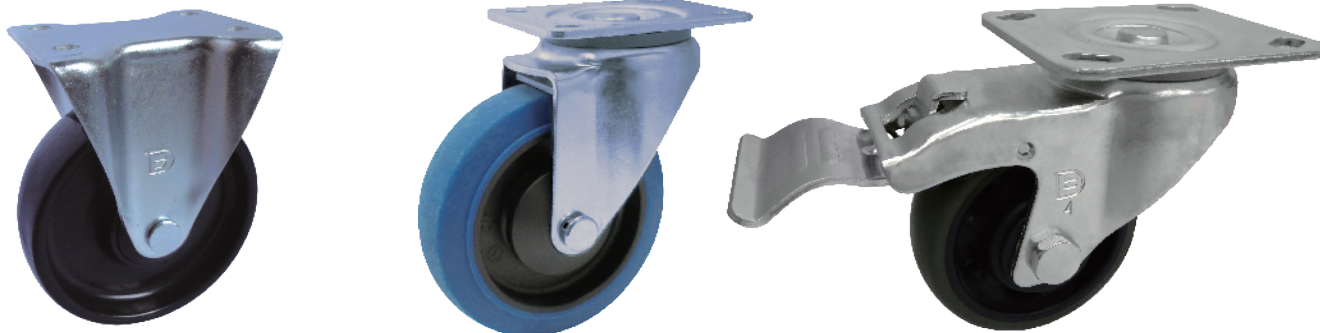


1151 Series

Heavy Duty 1.5" Wide General Purposes Caster (European Style)

○ Pressed steel caster horn/ housing design for European market. Extreme heavy-duty, made of 3.5mm thick steel, swivel easily with high performance total lock brake, suitable for medium and heavy duty logistic equipment.

Load
80-350 kg



» Features



Total Lock Brake with Extra Big Pedal (standard)

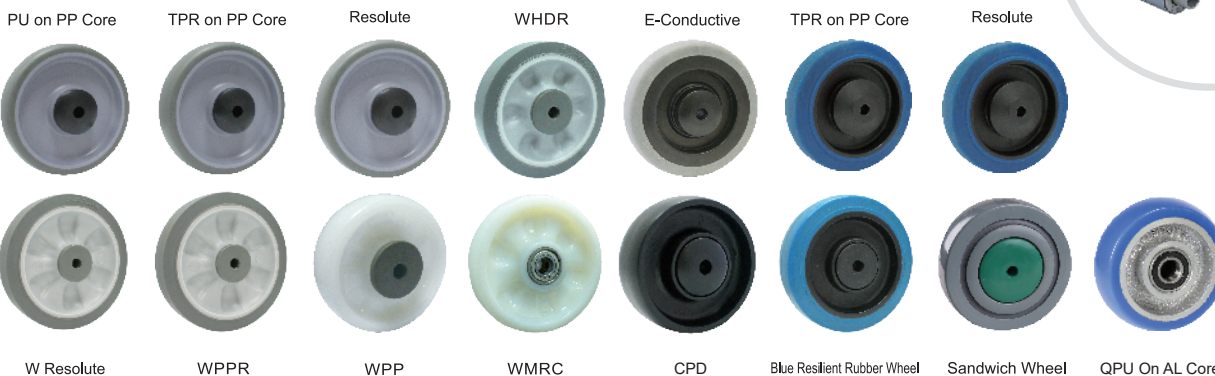
Swivel Dust Cover

Total Lock Brake with Short Pedal (also available)

Ball Bearing

Roller Bearing

» Wheel Options



W Resolute

WPPR

WPP

WMRC

CPD

Blue Resilient Rubber Wheel

Sandwich Wheel

QPU On AL Core






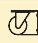

» TOP PLATE SIZE AND BOLT HOLE SPACING

Suffix	Top Plate Size	Bolt Hole Spacing	Attaching Bolt Size
1	85 x 105 mm (3-5/16" x 4-1/8")	60 x 80 mm 2-3/8"x3-1/4"(European Plate)	8 mm (5/16")



 Diameter×Width	 Load	 Material	 Item No.			 Bearing	 Overall Height	 Swivel radius
			Fixed	Swivel	Brake			
100mm x 31mm (4" x 1-1/4")	120kgs (265lbs)	PU on PP Core	1151-04-31-1	1151-04-31-2	1151-04-31-4	Ball Bearing	130mm (5-1/16")	Swivel 90mm Swivel W/Brake 137mm (Short Pedal) Swivel W/Brake 160mm (Extra Big Pedal)
	100kgs (220lbs)	TPR on PP Core	1151-04-75-1	1151-04-75-2	1151-04-75-4			
	125kgs (275lbs)	Resolute	1151-04-68-1	1151-04-68-2	1151-04-68-4			
	80kgs (176lbs)	E-Conductive	1151-04-17-1	1151-04-17-2	1151-04-17-4			
	180kgs (400lbs)	WHDR	1151-04-66-1	1151-04-66-2	1151-04-66-4			
	135kgs (300lbs)	W Resolute	1151-04-48-1	1151-04-48-2	1151-04-48-4			
	100kgs (220lbs)	WPPR	1151-04-47-1	1151-04-47-2	1151-04-47-4			
	130kgs (285lbs)	WPP	1151-04-46-1	1151-04-46-2	1151-04-46-4			
	180kgs (396lbs)	WMRC	1151-04-45-1	1151-04-45-2	1151-04-45-4			
100mm x 36mm (4" x 1-1/2")	160kgs (352lbs)	CPD	1151-04-71-1	1151-04-71-2	1151-04-71-4	Ball Bearing	130mm (5-1/16")	Swivel 90mm Swivel W/Brake 137mm (Short Pedal) Swivel W/Brake 160mm (Extra Big Pedal)
	160kgs (352lbs)	Blue Resilient Rubber Wheel	1151-04-50-1	1151-04-50-2	1151-04-50-4			
	140kgs (308lbs)	TPR on PP Core	1151-04-77-1	1151-04-77-2	1151-04-77-4			
	160kgs (352lbs)	Resolute	1151-04-76-1	1151-04-76-2	1151-04-76-4			
	325kgs (715lbs)	QPU on AL Core(Round)	1151-04-87-1	1151-04-87-2	1151-04-87-4			
100mm x 40mm (4" x 1-9/16")	350kgs (770lbs)	QPU on AL Core(Round)	1151-04(40)-87-1	1151-04(40)-87-2	1151-04(40)-87-4	Ball Bearing	130mm (5-1/16")	Swivel 90mm Swivel W/Brake 137mm (Short Pedal) Swivel W/Brake 160mm (Extra Big Pedal)
125mm x 31mm (5" x 1-1/4")	130kgs (285lbs)	PU on PP Core	1151-05-31-1	1151-05-31-2	1151-05-31-4	Ball Bearing	155mm (6-1/8")	Swivel 103mm Swivel W/Brake 137mm (Short Pedal) Swivel W/Brake 160mm (Extra Big Pedal)
	110kgs (240lbs)	TPR on PP Core	1151-05-75-1	1151-05-75-2	1151-05-75-4			
	147kgs (325lbs)	Resolute	1151-05-68-1	1151-05-68-2	1151-05-68-4			
	90kgs (198lbs)	E-Conductive	1151-05-17-1	1151-05-17-2	1151-05-17-4			
	200kgs (440lbs)	WHDR	1151-05-66-1	1151-05-66-2	1151-05-66-4			
	147kgs (325lbs)	W Resolute	1151-05-48-1	1151-05-48-2	1151-05-48-4			
	110kgs (240lbs)	WPPR	1151-05-47-1	1151-05-47-2	1151-05-47-4			
	150kgs (330lbs)	WPP	1151-05-46-1	1151-05-46-2	1151-05-46-4			
	200kgs (440lbs)	WMRC	1151-05-45-1	1151-05-45-2	1151-05-45-4			
125mm x 36mm (5" x 1-1/2")	200kgs (440lbs)	CPD	1151-05-71-1	1151-05-71-2	1151-05-71-4	Ball Bearing	155mm (6-1/8")	Swivel 103mm Swivel W/Brake 137mm (Short Pedal) Swivel W/Brake 160mm (Extra Big Pedal)
	250kgs (550lbs)	Blue Resilient Rubber Wheel	1151-05-50-1	1151-05-50-2	1151-05-50-4			
	160kgs (352lbs)	TPR on PP Core	1151-05-77-1	1151-05-77-2	1151-05-77-4			
	180kgs (400lbs)	Resolute	1151-05-76-1	1151-05-76-2	1151-05-76-4			
	250kgs (550lbs)	Sandwich Wheel	1151-05-40-1	1151-05-40-2	1151-05-40-4	Roller Bearing		



 Diameter×Width	 Load	 Material	 Item No.			 Bearing	 Overall Height	 Swivel radius
			Fixed	Swivel	Brake			
125mm x 40mm (5" x 1-9/16")	350kgs (770lbs)	QPU on AL Core(Round)	1151-05-87-1	1151-05-87-2	1151-05-87-4	Ball Bearing	155mm (6-1/8")	Swivel 103mm Swivel W/Brake 137mm (Short Pedal) Swivel W/Brake 160mm (Extra Big Pedal)
150mm x 31mm (6" x 1-1/4")	130kgs (285lbs)	PU on PP Core	1151-06-31-1	1151-06-31-2	1151-06-31-4	Ball Bearing	188mm (7-1/2")	Swivel 115mm Swivel W/Brake 137mm (Short Pedal) Swivel W/Brake 160mm (Extra Big Pedal)
	110kgs (240lbs)	TPR on PP Core	1151-06-75-1	1151-06-75-2	1151-06-75-4			
	147kgs (325lbs)	Resolute	1151-06-68-1	1151-06-68-2	1151-06-68-4			
	90kgs (198lbs)	E-Conductive	1151-06-17-1	1151-06-17-2	1151-06-17-4			
	200kgs (440lbs)	WHDR	1151-06-66-1	1151-06-66-2	1151-06-66-4			
	147kgs (325lbs)	W Resolute	1151-06-48-1	1151-06-48-2	1151-06-48-4			
	110kgs (240lbs)	WPPR	1151-06-47-1	1151-06-47-2	1151-06-47-4			
150mm x 42mm (6" x 1-5/8")	350kgs (770lbs)	QPU on AL Core(Round)	1151-06-87-1	1151-06-87-2	1151-06-87-4	Ball Bearing	188mm (7-1/2")	Swivel 115mm Swivel W/Brake 137mm (Short Pedal) Swivel W/Brake 160mm (Extra Big Pedal)