



1165 Series Heavy Duty AMR/AGV-2 Caster

Load
70 - 400 kg

○ Caster fork is made of high tensile steel with harden raceway to provide long lasting service life and extreme high load capacity while maintaining low profile and overall height. It is suitable for application like AMR/AGV and robotic industry products.

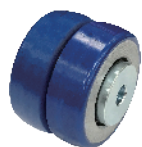


» Features



Metal Thread Guard(optinal)

» Wheel Options



ZQPU(Dual Wheels)



QPU



QPU(Dual Anti-Static Wheels)



King Kong Wheel








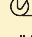

Ball Bearing

*Other Anti-Static Wheels Available, Please Contact The Factory

» TOP PLATE SIZE AND BOLT HOLE SPACING

Suffix	Top Plate Size	Bolt Hole Spacing	Attaching Bolt Size
1.5", 2"	51 x 65 mm (2" x 2-9/16")	36 x 51.5 mm (1-13/32" x 2-1/32")	6 mm (1/4")
	51 x 84 mm (2" x 3-5/16")	37 x 70 mm (1-15/32" x 2-3/4")	6 mm (1/4")
	60 x 60 mm (2-3/8" x 2-3/8")	42.5 x 42.5 mm (1-11/16" x 1-11/16")	6 mm (1/4")
	60 x 90 mm (2-3/8" x 3-17/32")	44.5 x 73 mm (1-3/14" x 2-7/8")	8 mm (5/16")
2.5", 3", 4"	85 x 110 mm (3-11/32" x 4-11/23")	60 x 80~86 mm (2-3/8" x 3-5/32"~3-3/8")	8 mm (5/16")



 DiameterxWidth	 Load	** Guarantee 2000 KM/ 1250 Miles	 Material	 Item No.			 Bearing	 Overall Height	 Swivel radius
				Fixed	Swivel	Brake			
34mm x 15mm (33) (1-21/64" x 19/32")	70 kgs (154 lbs)	50 kgs (110 lbs)	ZQPU(Dual Wheels)	1165-15-101-1(2)	1165-15-101-2(2)	—	Ball Bearing	52mm (2-3/64")	Swivel 40 mm
	70 kgs (154 lbs)	50 kgs (110 lbs)	QPU(Dual Anti-Static Wheels)	1165-15-101-1(2)	1165-15-101-2(2)	—			
50mm x 20mm (41.5) (2" x 3/4")	70 kgs (154 lbs)	50 kgs (110 lbs)	ZQPU(Dual Wheels)	1165-02-101-1(2)	1165-02-101-2(2)	—	Ball Bearing	79mm (3-7/64")	Swivel 46 mm
	70 kgs (154 lbs)	50 kgs (110 lbs)	QPU(Dual Anti-Static Wheels)	1165-02-101-1(2)	1165-02-101-2(2)	—			
50mm x 40mm (2" x 1-9/16")	70 kgs (154 lbs)	50 kgs (110 lbs)	QPU	1165-02-53-1(2)	1165-02-53-2(2)	—			
50mm x 45mm (2" x 1-13/16")	70 kgs (154 lbs)	—	King Kong Wheel	1165-02-100-1(2)	1165-02-100-2(2)	—			
62.5mm x 20mm (41.5) (2-1/2" x 3/4")	250 kgs (551 lbs)	84 kgs (185 lbs)	ZQPU(Dual Wheels)	1165-25-101-1(2)	1165-25-101-2(2)	—	Ball Bearing	87mm (3-27/64")	Swivel 65 mm
	200 kgs (440 lbs)	67 kgs (147 lbs)	QPU(Dual Anti-Static Wheels)	1165-25-101-1(2)	1165-25-101-2(2)	—			
62.5mm x 45mm (2-1/2" x 1-13/16")	250 kgs (551 lbs)	—	King Kong Wheel	1165-25-100-1(2)	1165-25-100-2(2)	—			
	200 kgs (440 lbs)	67 kgs (147 lbs)	QPU	1165-25-80-1(2)	1165-25-80-2(2)	—			
62.5mm x 20mm (41.5) (2-1/2" x 3/4")	250 kgs (551 lbs)	84 kgs (185 lbs)	ZQPU(Dual Wheels)	1165-25-101-1(2)	1165-25-101-2(2)	—	Ball Bearing	94mm (3-45/64")	Swivel 62 mm
	200 kgs (440 lbs)	67 kgs (147 lbs)	QPU(Dual Anti-Static Wheels)	1165-25-101-1(2)	1165-25-101-2(2)	—			
62.5mm x 45mm (2-1/2" x 1-13/16")	250 kgs (551 lbs)	—	King Kong Wheel	1165-25-71-1(2)	1165-25-71-2(2)	—			
	200 kgs (440 lbs)	67 kgs (147 lbs)	QPU	1165-25-53-1(2)	1165-25-53-2(2)	—			
75mm x 20mm (41.5) (3" x 3/4")	300 kgs (661 lbs)	100 kgs (220 lbs)	ZQPU(Dual Wheels)	1165-03-101-1(2)	1165-03-101-2(2)	—	Ball Bearing	105.5mm (4-5/32")	Swivel 72.5 mm
	250 kgs (551 lbs)	84 kgs (185 lbs)	QPU(Dual Anti-Static Wheels)	1165-03-101-1(2)	1165-03-101-2(2)	—			
75mm x 45mm (3" x 1-13/16")	300 kgs (661 lbs)	—	King Kong Wheel	1165-03-100-1(2)	1165-03-100-2(2)	—			
	250 kgs (551 lbs)	84 kgs (185 lbs)	QPU	1165-03-80-1(2)	1165-03-80-2(2)	—			
75mm x 20mm (41.5) (3" x 3/4")	300 kgs (661 lbs)	100 kgs (220 lbs)	ZQPU(Dual Wheels)	1165-03-101-1(2)	1165-03-101-2(2)	—	Ball Bearing	115.5mm (4-17/32")	Swivel 72.5 mm
	250 kgs (551 lbs)	84 kgs (185 lbs)	QPU(Dual Anti-Static Wheels)	1165-03-101-1(2)	1165-03-101-2(2)	—			
75mm x 45mm (3" x 1-13/16")	300 kgs (661 lbs)	—	King Kong Wheel	1165-03-71-1(2)	1165-03-71-2(2)	—			
	300 kgs (661 lbs)	100 kgs (661 lbs)	QPU	1165-03-53-1(2)	1165-03-53-2(2)	—			
100mm x 22mm (41.5) (4" x 7/8")	400 kgs (881 lbs)	134 kgs (295 lbs)	ZQPU(Dual Wheels)	1165-04-101-1(2)	1165-04-101-2(2)	—	Ball Bearing	125mm (4-59/64")	Swivel 90 mm
	350 kgs (771 lbs)	117 kgs (157 lbs)	QPU(Dual Anti-Static Wheels)	1165-04-101-1(2)	1165-04-101-2(2)	—			

*The load is tested according to the ISO test standard

** Guarantee 2000 km life span on the selected AGV caster models under normal field application.
Dersheng reserves the right of the final interpretation on the caster test method and 2000 km guarantee.